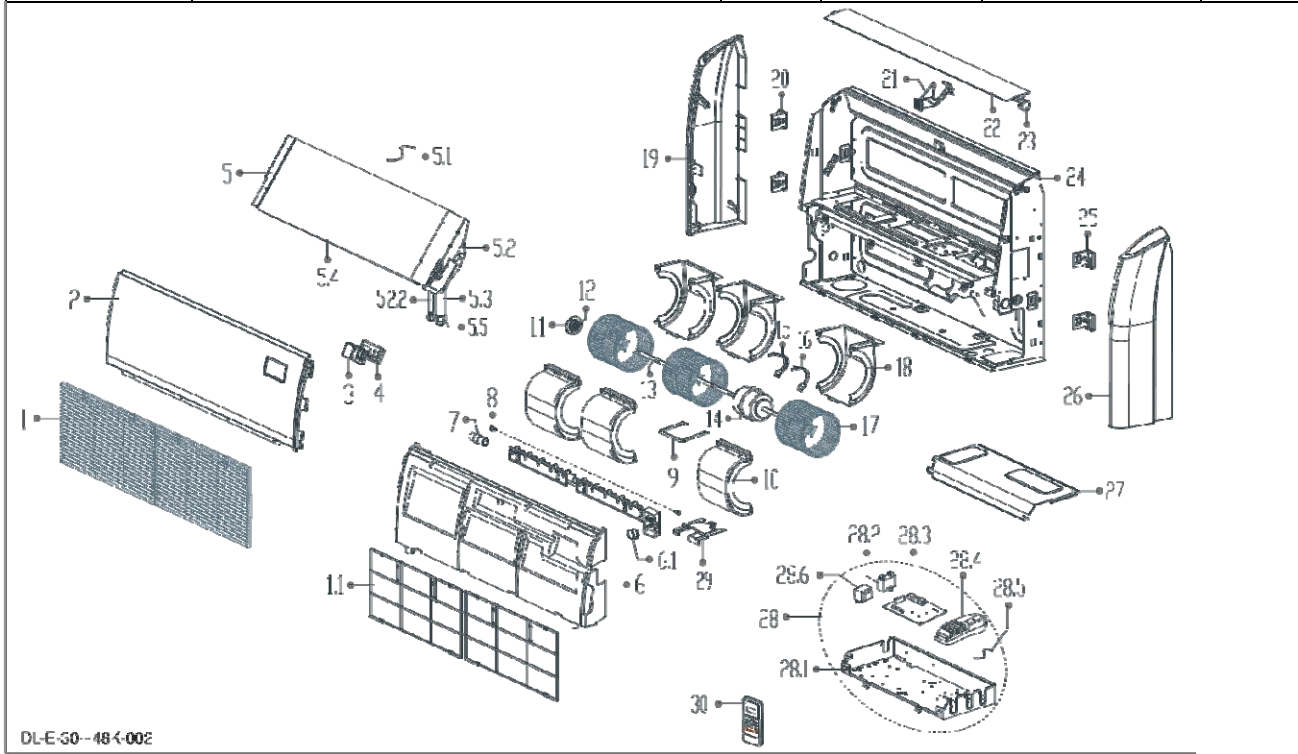


Exploded View



JCI Model:	YNFFXC036BBH--FX			
Factory Model:	EXP_22022711000303(SA-KF105DL/Y-E)			
Power Supply:	220-230V~ 60Hz 1Phase		Export Time:	



DL-E-50--484-002

No.	Part Name	Quantity	BOM Code	Price	Remark
1	Air Returning Grille Subassembly	2.0	121M22700000096		
1.1	Air Filter	1.0	121M00204000718		
2	Top cover	1.0	122M22700000094		
3	VLED Display Module	1.0	171M22700000005		
4	Display panel box	1.0	121M22700000044		
5	Evaporator assembly Gas valve assembly	1.0	158M22700000124		
5.1	Temperature Sensor	1.0	112M01007000006		
5.2	Input pipes of Evaporator assemblyJoint board of Evaporator	1.0	151M22700000214		
5.2.2	Throttling valve	1.0	155M00210000026		
5.3	Outlet Pipes of Evaporator	1.0	151M22700000205		
5.4	Evaporator	1.0	158M22700000214		
5.5	Brass Nut	1.0	155M00406000008		
6	Water receiver subassembly	1.0	128M22700000011		
6.1	stepper motor	1.0	110M02010000034		
7	Coupling	1.0	129M23000000004		
8	Anti-power Shaft	2.0	121M22000000344		
9	Motor Boarding	1.0	122M22700000079		
10	Upper Volute	3.0	121M22700000047		
11	Fixed plate of bearing	1.0	122M22000003769		
12	Bearing pedestal	1.0	126M22000000013		
13	Intermediate Shaft	1.0	129M22700000004		
14	Single-phase Asynchronous Motor	1.0	110M02012000370		
15	Right Gland of Motor Bush	1.0	122M22500000255		
16	Left Gland of Motor Bush	1.0	122M22500000253		
17	Centrifugal Fan	3.0	121M00103000002		
18	Lower Scroll	3.0	121M22700000111		

19	Cover plate (right)	1.0	121M22700000087		
20	Installation Right Hanger	2.0	122M22700000018		
21	Guide holder	1.0	121M22700000150		
22	Subassembly of Air Guide Strip	1.0	121M22700000058		
23	stepper motor	1.0	110M02010000057		
24	Chassis Assembly	1.0	122M22700000161		
25	Installation Left Hanger	2.0	122M22700000016		
26	Cover plate (left)	1.0	121M22700000093		
27	E-Part Box Cover Subassembly	1.0	122M22700000058		
28	Electrical Control Box Subassembly	1.0	172M22700000017		
28.1	Welding Parts of Electrical Control Box	1.0	122M22700000083		
28.2	Motor Capacitor	1.0	174M00101000015		
28.3	Indoor Main Control Board Subassembly	1.0	171M22700000038		
28.4	Wire holder	1.0	174M00401000057		
28.5	Room Temperature Sensor	1.0	112M01007000073		
28.6	Power Transformer	1.0	112M03103000160		
28.6	Power Transformer	1.0	112M03103000065		
29	Connecting pipe clamp	1.0	122M22700000054		
30	Remote Controller	1.0	173M17000000185		
30.1	Holder for remote controller	1.0	121M17000000104		